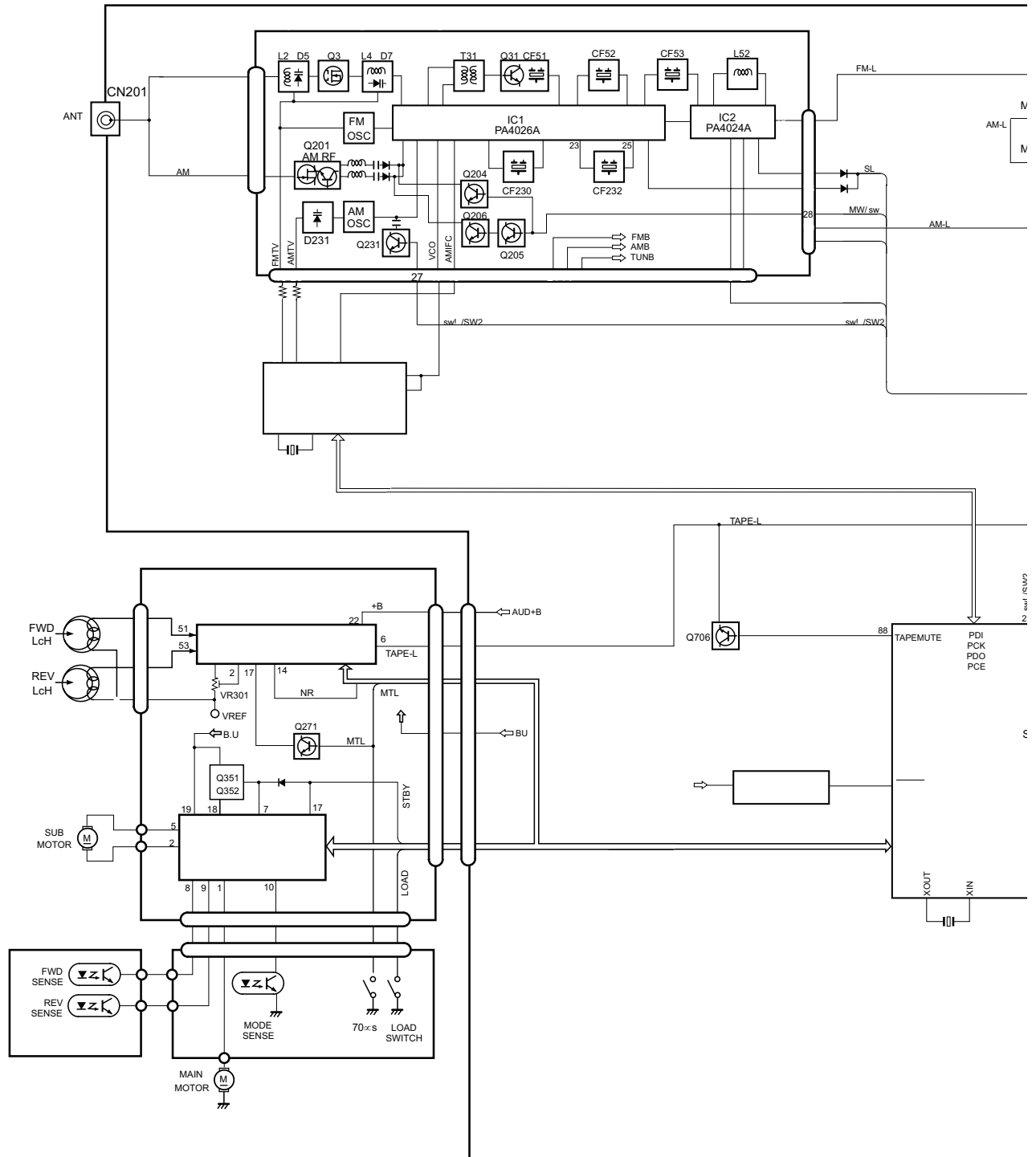


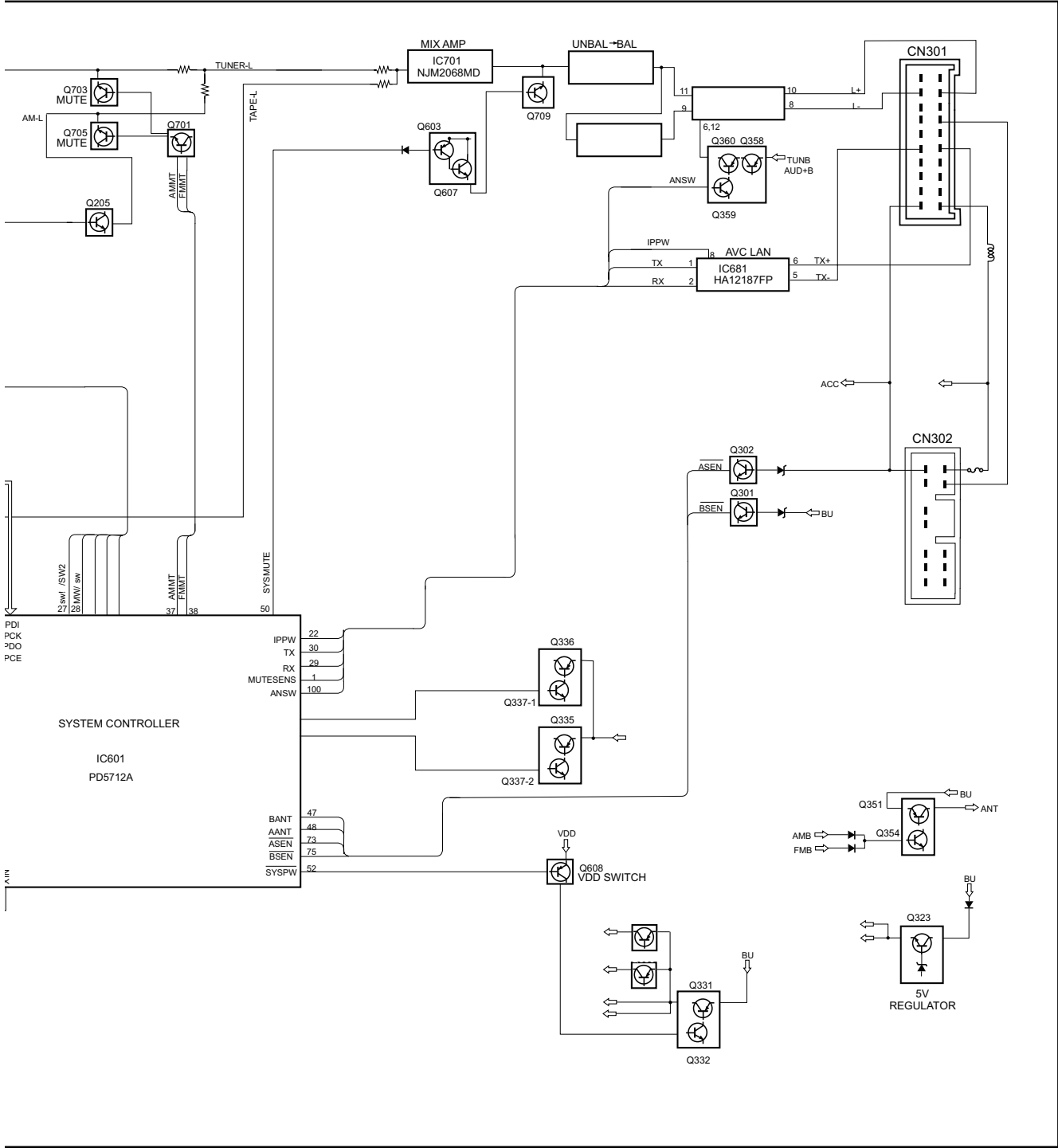
BLOCK DIAGRAM AND SCHEMATIC DIAGRAM

BLOCK DIAGRAM



www.electronicrepair.net

A



B

C

D

MAIN UNIT

ANTENNA JACK

CN201

MAIN

GND

CN202

FM/AM TUNER UNIT

FM-36B8(A0042,301)

AM-16B8(A0042,301)

IC201

IC202

IC203

IC204

IC205

IC206

IC207

IC208

IC209

IC210

IC211

IC212

IC213

IC214

IC215

IC216

IC217

IC218

IC219

IC220

IC221

IC222

IC223

IC224

IC225

IC226

IC227

IC228

IC229

IC230

IC231

IC232

IC233

IC234

IC235

IC236

IC237

IC238

IC239

IC240

IC241

IC242

IC243

IC244

IC245

IC246

IC247

IC248

IC249

IC250

IC251

IC252

IC253

IC254

IC255

IC256

IC257

IC258

IC259

IC260

IC261

IC262

IC263

IC264

IC265

IC266

IC267

IC268

IC269

IC270

IC271

IC272

IC273

IC274

IC275

IC276

IC601
PD5712SYSTEM
CONTROLLER

DECK UNIT

IC301

IC302

IC303

IC304

IC305

IC306

IC307

IC308

IC309

IC310

IC311

IC312

IC313

IC314

IC315

IC316

IC317

IC318

IC319

IC320

IC321

IC322

IC323

IC324

IC325

IC326

IC327

IC328

A

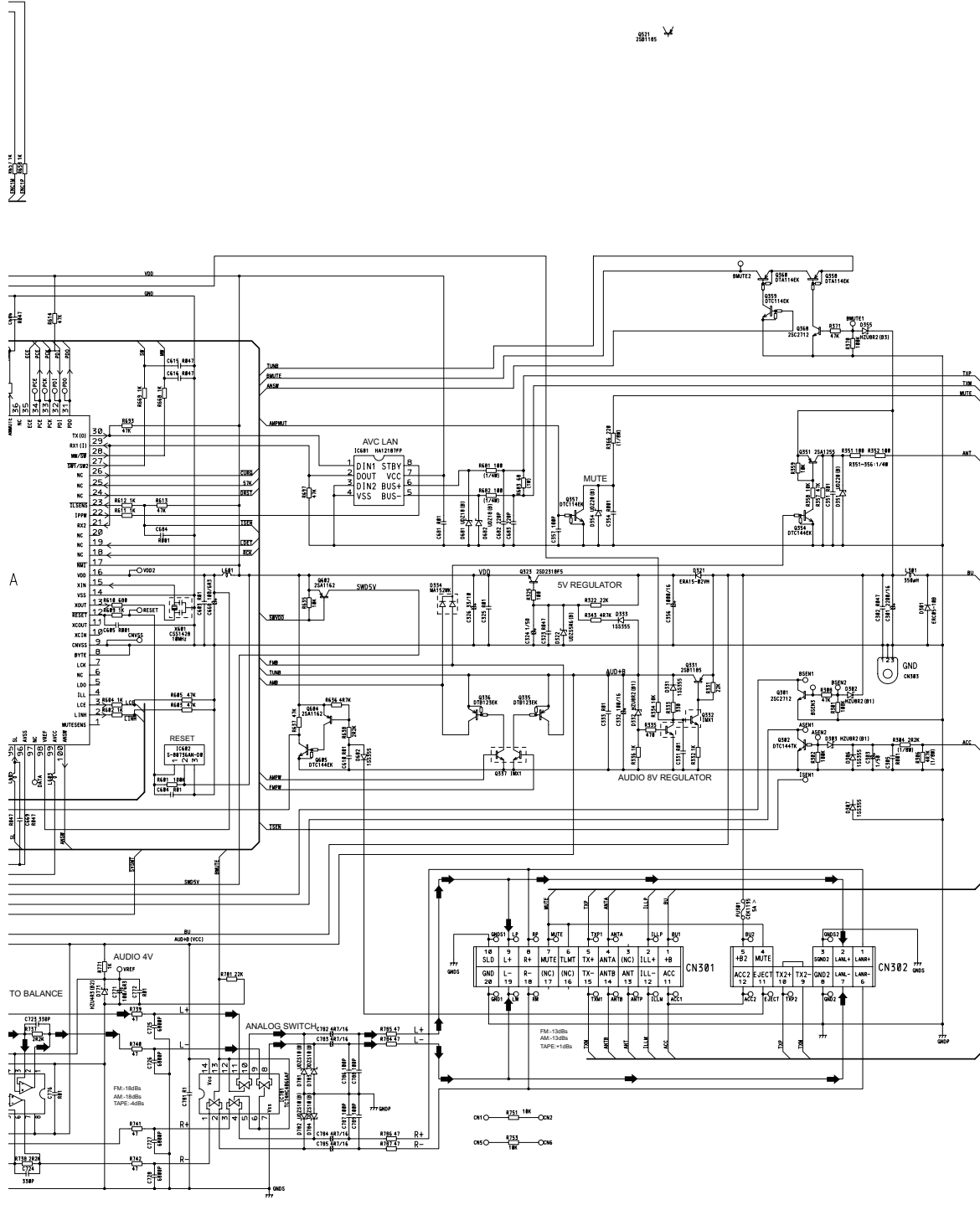
NOTE:

⊖ Symbol indicates a resistor.
No differentiation is made between chip resistors and discrete resistors.

⊖ Symbol indicates a capacitor.
No differentiation is made between chip capacitors and discrete capacitors.

Decimal points for resistor and capacitor fixed values are expressed as:
2.2 2R2
0.022 1022

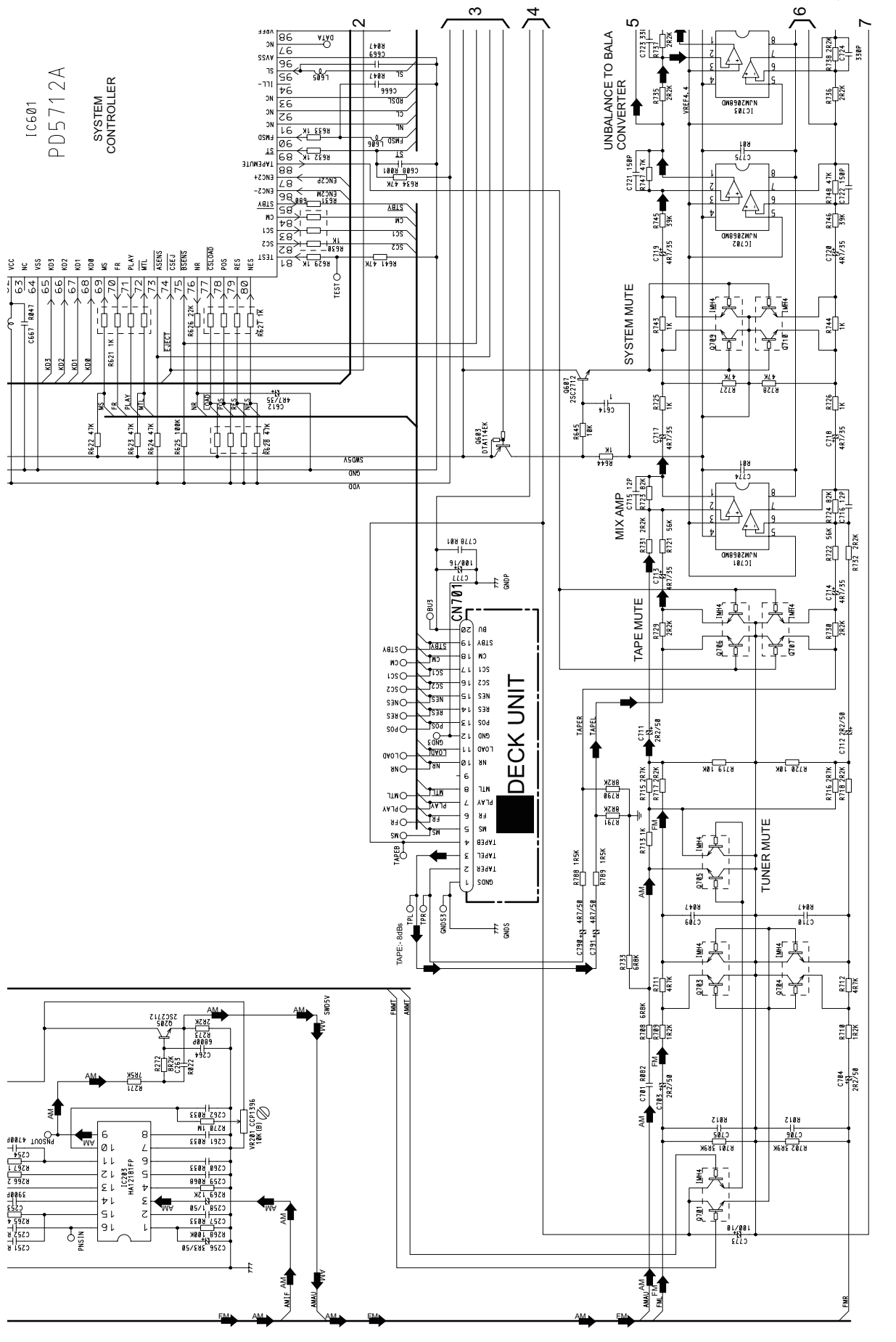
The > mark found on some component parts indicates the importance of the safety factor of the part. Therefore, when replacing, be sure to use parts of identical designation.



B

C

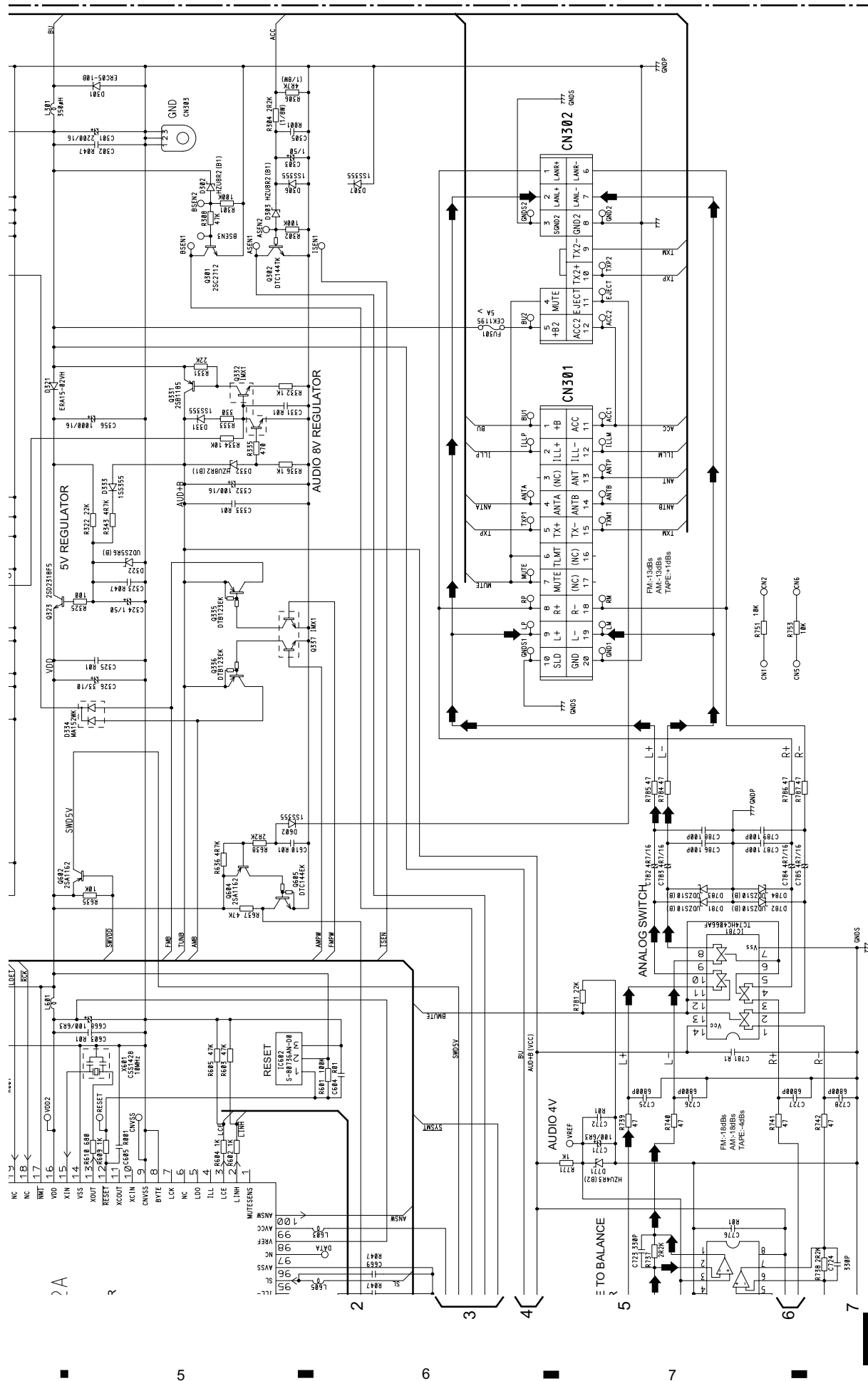
D



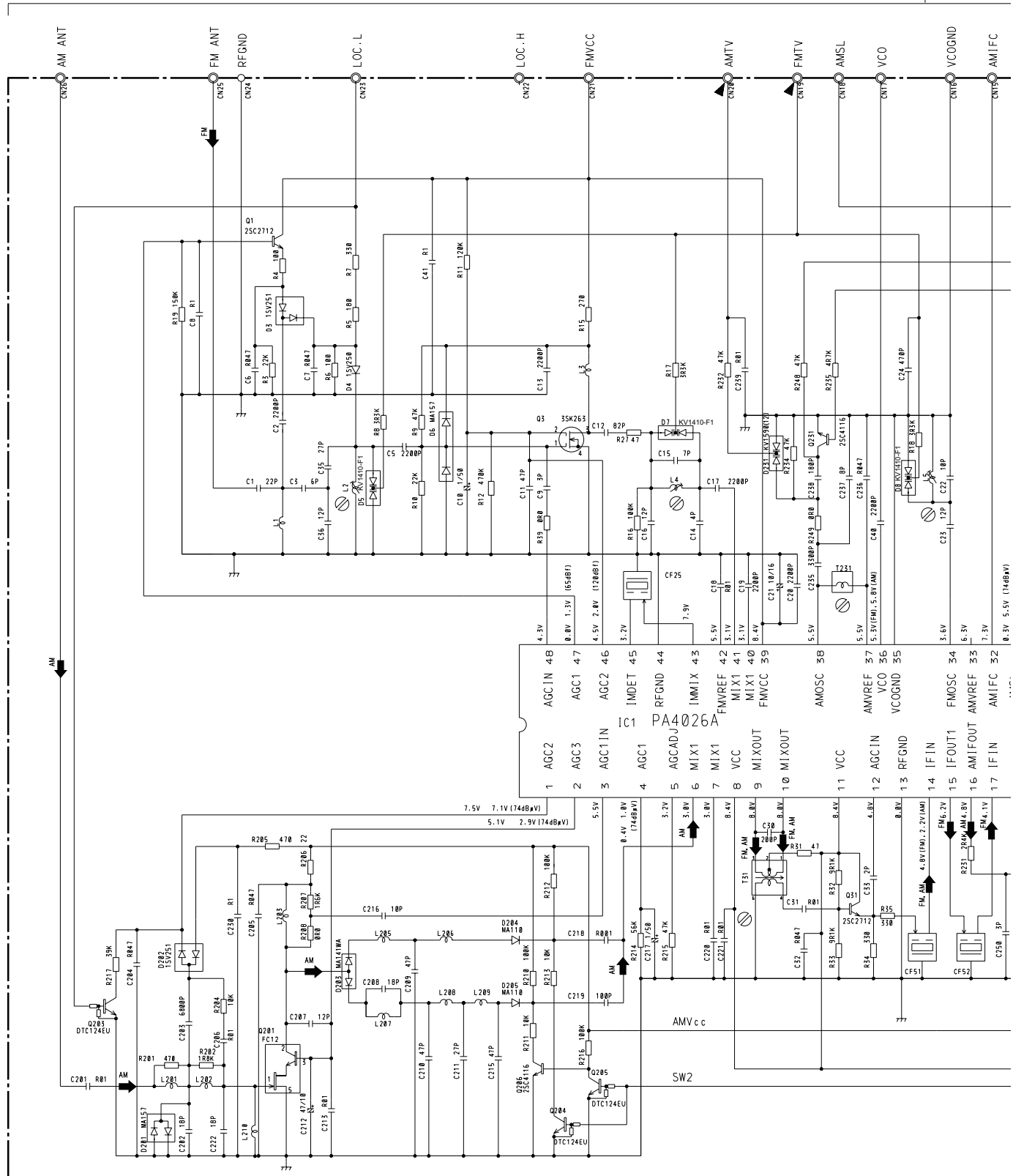
www.electronicrepair.net

A-a	A-b

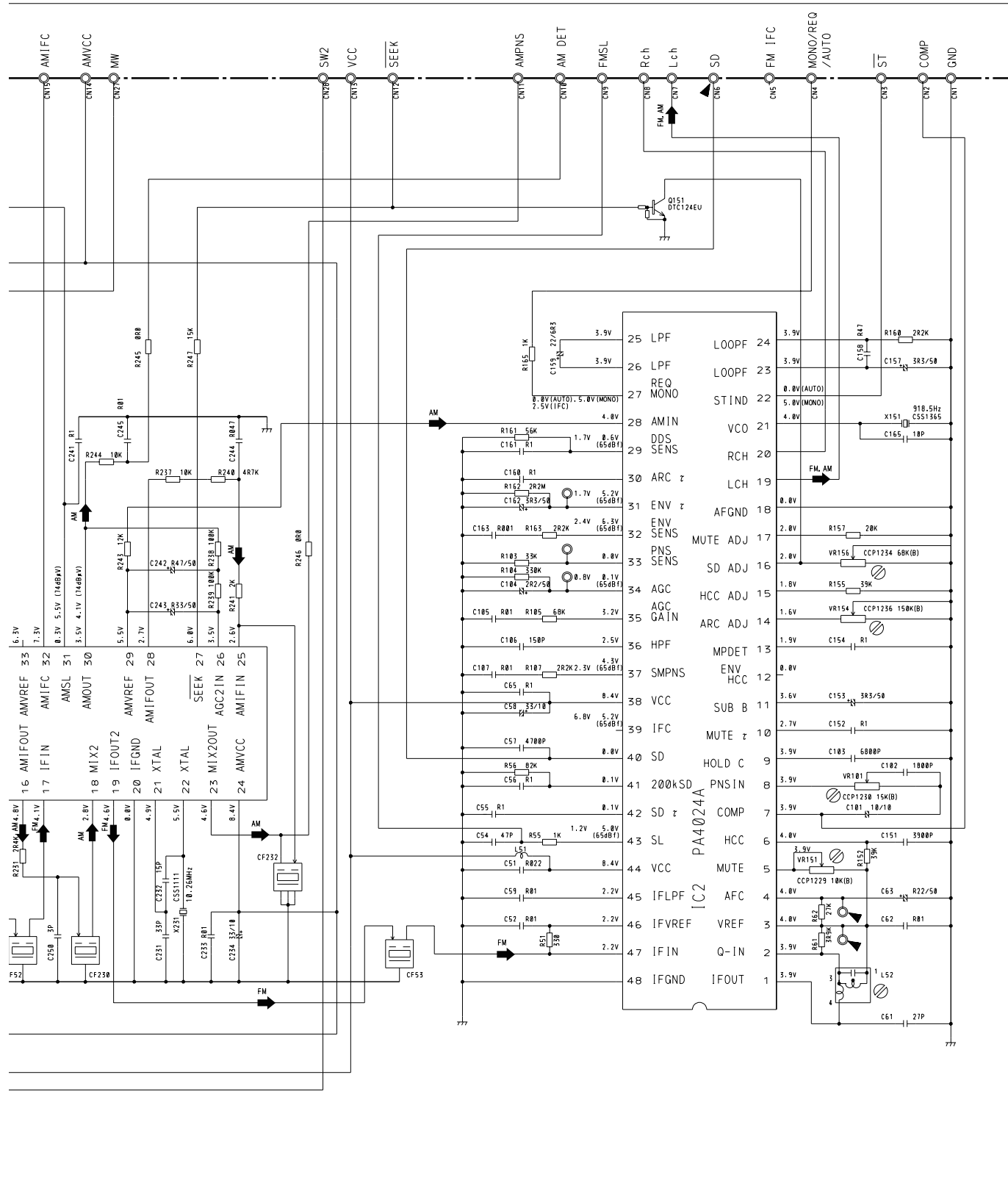
A-a

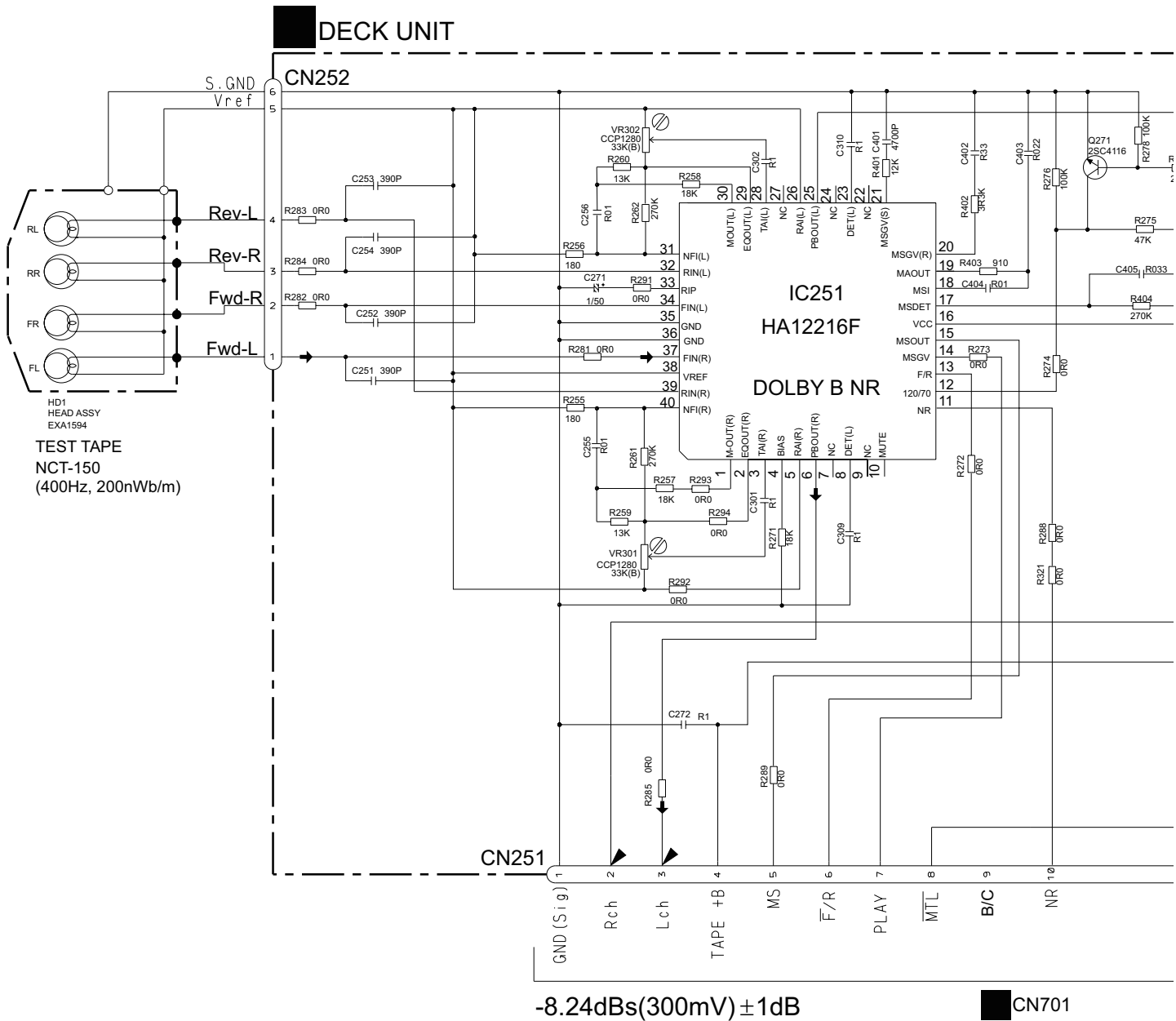


FM/AM TUNER UNIT

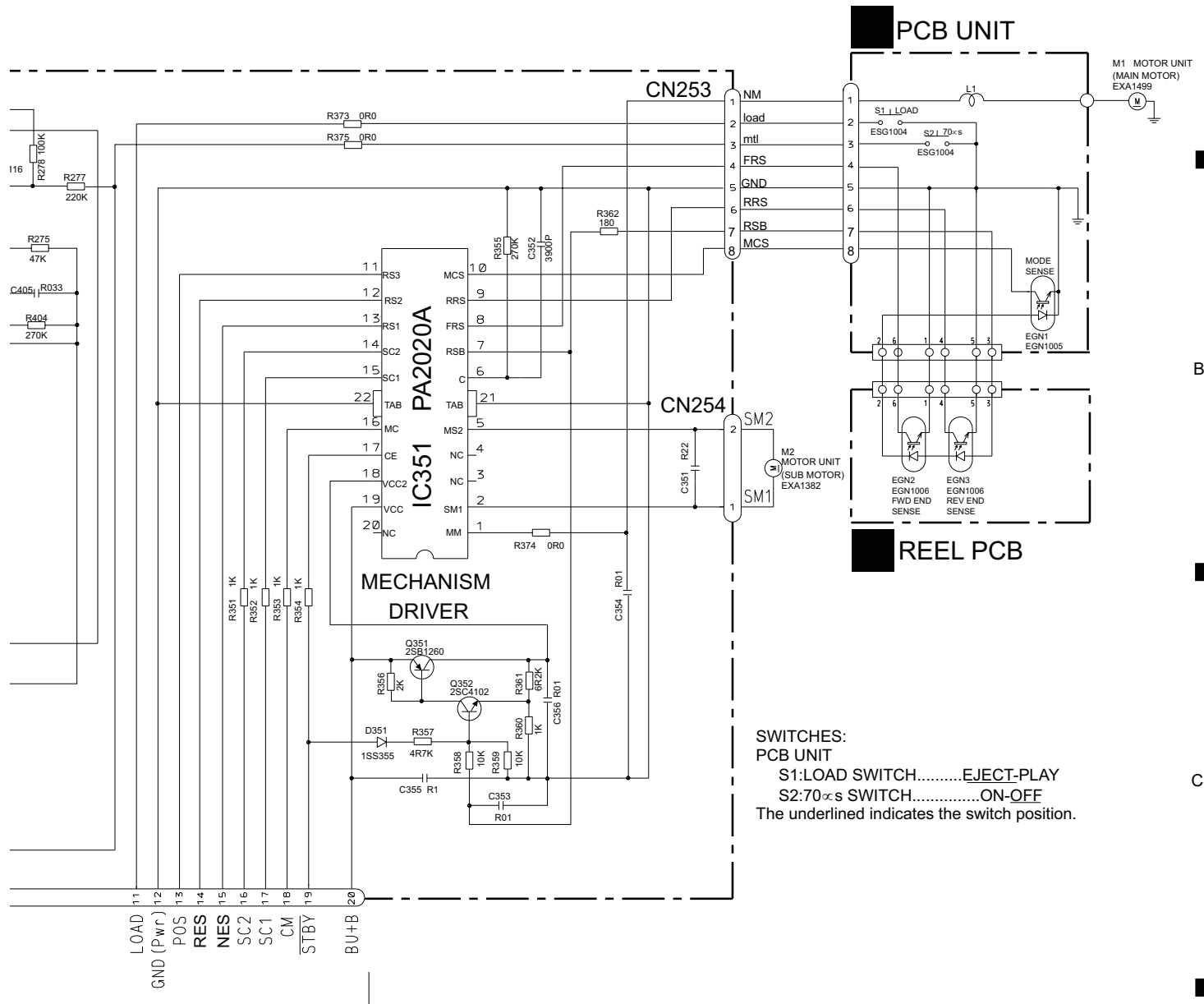


D

**B**

DECK UNIT

A



B

C

D