

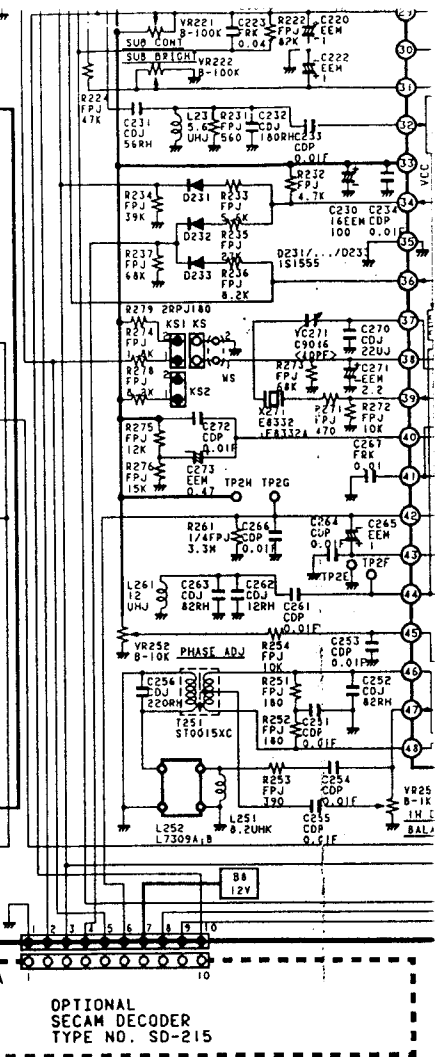
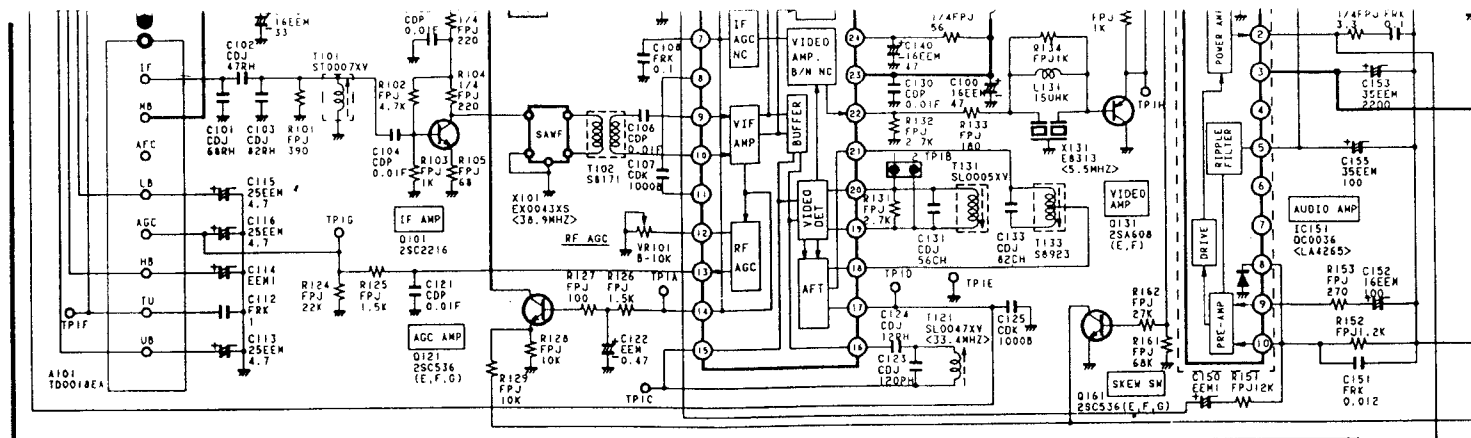
COLOUR TELEVISION

SANYO

85P CHASSIS SERIES

SERVICE REF. NO. **CEP2105V-00**

Part No. 3P04602a BRMT



PRODUCT SAFETY NOTICE

PRODUCT SAFETY SHOULD BE CONSIDERED WHEN A COMPONENT REPLACEMENT IS MADE IN ANY AREA OF A RECEIVER. COMPONENTS INDICATED BY A MARK Δ IN THIS CIRCUIT DIAGRAM SHOW COMPONENTS WHOSE VALUE HAVE SPECIAL SIGNIFICANCE TO PRODUCT SAFETY. IT IS PARTICULARLY RECOMMENDED THAT ONLY PARTS SPECIFIED ON THE PARTS LIST OF SERVICE MANUAL BE USED FOR COMPONENTS REPLACEMENT POINTED OUT BY THE MARK Δ .

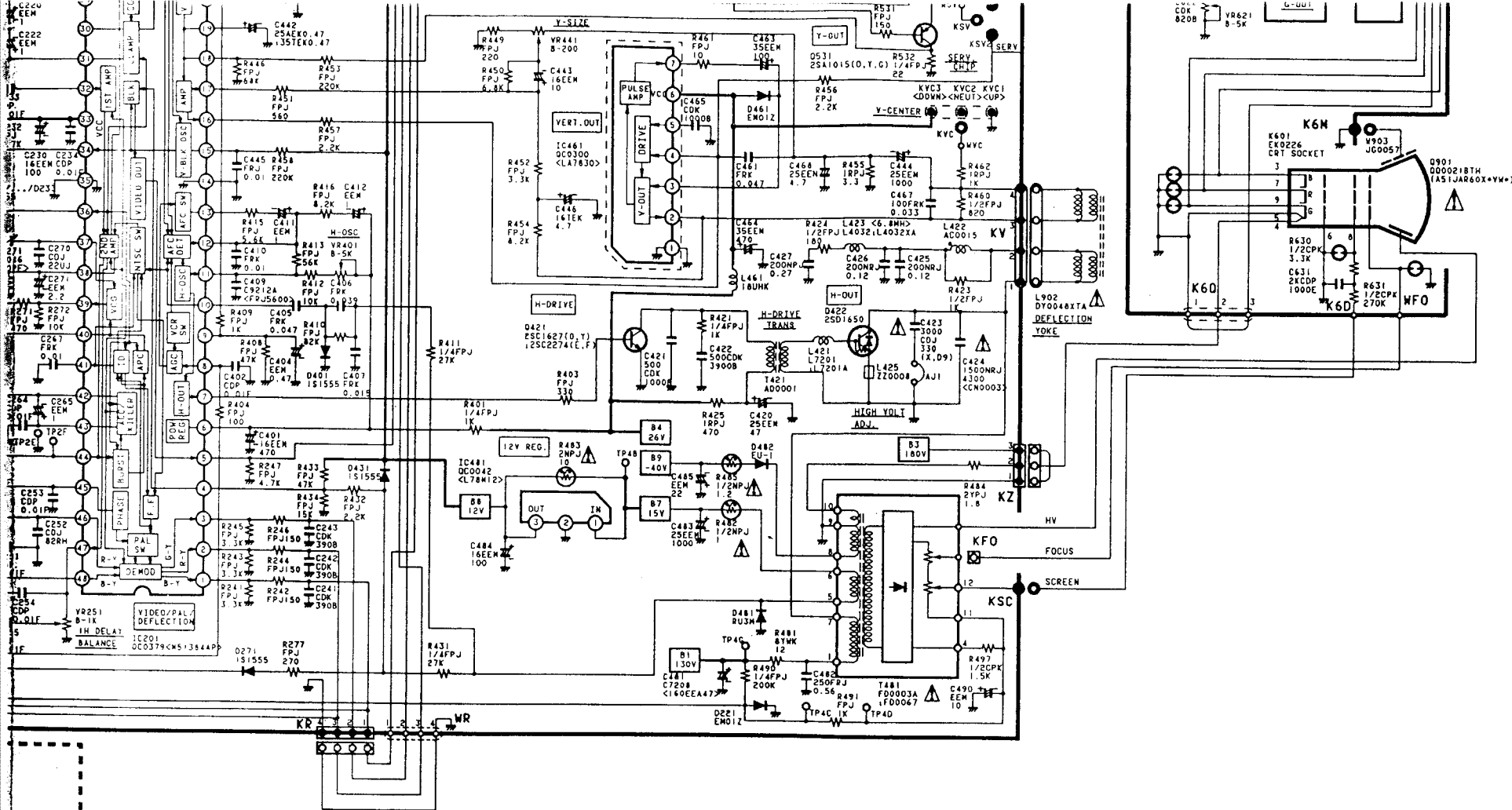
CIRCUIT DIAGRAM NOTES:

1. ALL RESISTANCE VALUES ARE IN OHMS; K=1,000; M=1,000,000.
2. ALL RESISTANCE RATED WATTAGES ARE 1/4W UNLESS OTHERWISE NOTED.
3. EXCEPTING ELECTROLYTIC CAPACITORS, ALL CAPACITANCE VALUES OF LESS THAN 1 ARE EXPRESSED IN UF, AND MORE THAN 1 ARE IN PF. ELECTROLYTIC CAPACITANCE VALUES ARE IN MF.
4. ALL CAPACITANCE RATED VOLTAGES ARE 50V UNLESS OTHERWISE NOTED.
5. ALL INDUCTANCE VALUES ARE IN MH.
6. VOLTAGE READINGS TAKEN WITH A "TESTER" ARE FROM POINT INDICATED TO CHASSIS GROUND. VOLTAGE READINGS TAKEN BY USING A COLOUR BAR SIGNAL ARE WITH ALL CONTROLS AT NORMAL AND AFC SWITCH IN "OFF" POSITION. SOME VOLTAGES MAY VARY WITH SIGNAL STRENGTH.
7. WAVEFORMS WERE TAKEN WITH COLOUR BAR SIGNAL AND CONTROLS ADJUSTED FOR NORMAL PICTURE. WAVEFORMS WERE TAKEN BY USING A WIDE BAND OSCILLOSCOPE AND A LOW CAPACITY PROBE.
8. THIS CIRCUIT DIAGRAM COVERS A BASIC OR REPRESENTATIVE CHASSIS ONLY. THERE MAY BE SOME COMPONENTS OR PARTIAL CIRCUIT DIFFERENCES BETWEEN THE ACTUAL CHASSIS AND THE CIRCUIT DIAGRAM.

9. EXPRESSION OF CAPACITANCE

CAPACITANCE (E) 1000 C O M 220

RESISTANCE (E) 1/2 W P J 1.2



SECTION OF CAPACITANCE AND RESISTANCE IN CIRCUIT DIAGRAM.

CAPACITANCE (EXAMPLE)

1000 C 0.1M 2200 D

CHARACTERISTIC
CAPACITANCE VALUE (2200PF)
ALLOWABLE ERROR (1-20%)
TERMINAL CONSTRUCTION
KIND (CERAMIC)
RATED VOLTAGE (1000V)

RESISTANCE (EXAMPLE)

1/2.2M P 1.2

RESISTANCE VALUE (1.2 OHM)
ALLOWABLE ERROR (1-5%)
TERMINAL CONSTRUCTION
KIND (METALIZED CARBON)
RATED VOLTAGE (1/2W)

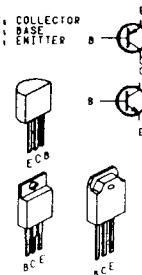
*KIND --- C ... CERAMIC
E ... ELECTROLYTIC
F ... MYLAR FILM
M ... POLYPROPYLENE

*KIND --- F ... CARBON
M ... METALIZED CARBON
R ... OXIDE METALIZED
Y ... WIRE WOUND
C ... SOLID

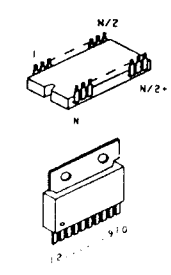
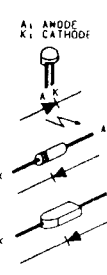
*ALLOWABLE ERROR --- G ... +2%
J ... +5%
K ... +10%
M ... +20%
Z ... +80% -20%
P ... +100% -0%

TRANSISTOR, DIODE & INTEGRATED CIRCUIT TERMINAL GUIDE

C ... COLLECTOR
B ... BASE
E ... EMITTER



A ... ANODE
K ... CATHODE



PARTICULAR PARTS SYMBOL

FUSIBLE RESISTOR



NON-POLE ELECTROLYTIC CAPACITOR



POSTER

www.electronicrepair.net

www.electronicrepair.net

